

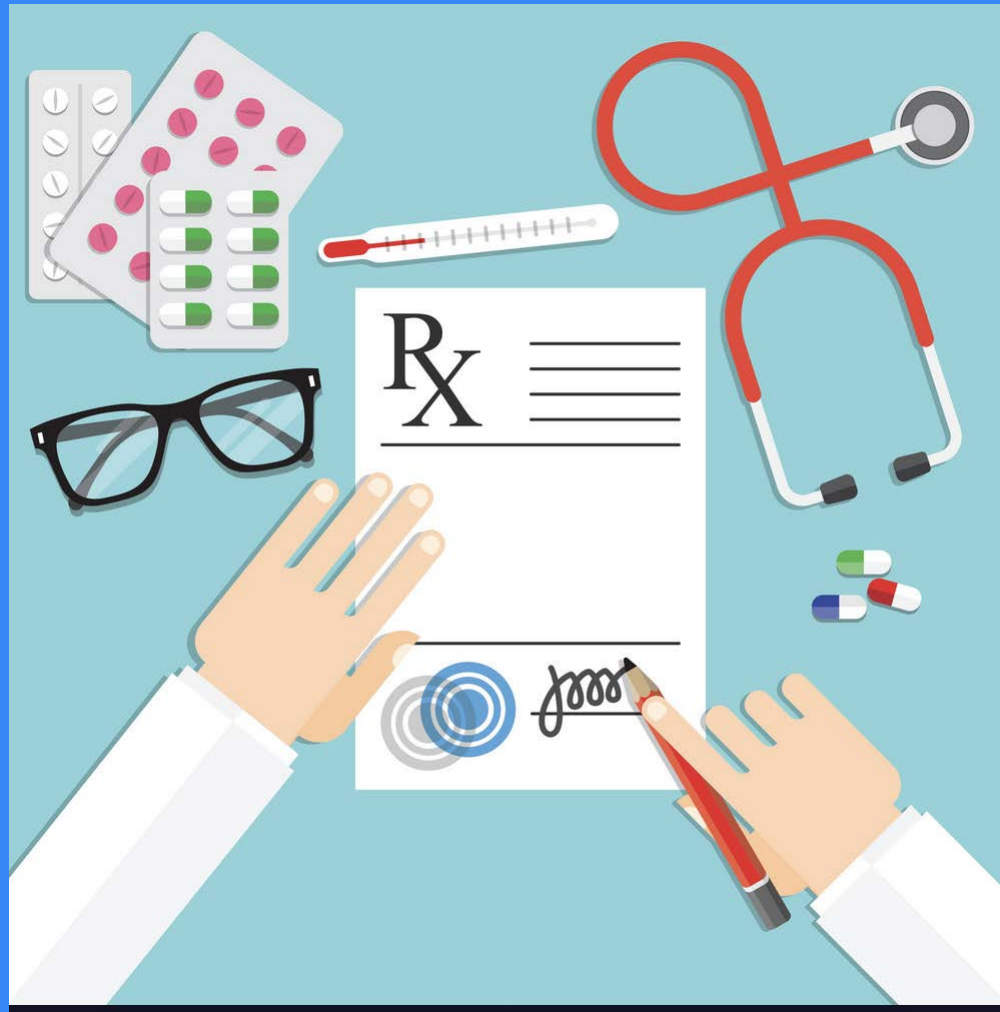
Flatiron Health

Power in the information age: inside our mission to learn from the patient experience

OUR MISSION

To improve lives by learning from the experience of every cancer patient.







Flatiron offers industry-leading cloud-based software and services for community oncologists



We've built real-world datasets for a number of malignancies

- Advanced Gastric Cancer
- Advanced Head and Neck Cancer
- Advanced Melanoma
- Advanced Non-Small Cell Lung Cancer
- Advanced Urothelial Carcinoma
- Chronic Lymphocytic Leukemia
- Diffuse Large B-Cell Lymphoma
- Early Breast Cancer
- Hepatocellular Carcinoma
- Mesothelioma
- Metastatic Breast Cancer
- Metastatic Colorectal Cancer
- Metastatic Pancreatic Cancer
- Metastatic Prostate Cancer
- Metastatic Renal Cell Carcinoma
- Multiple Myeloma
- Ovarian Cancer
- Small Cell Lung Cancer

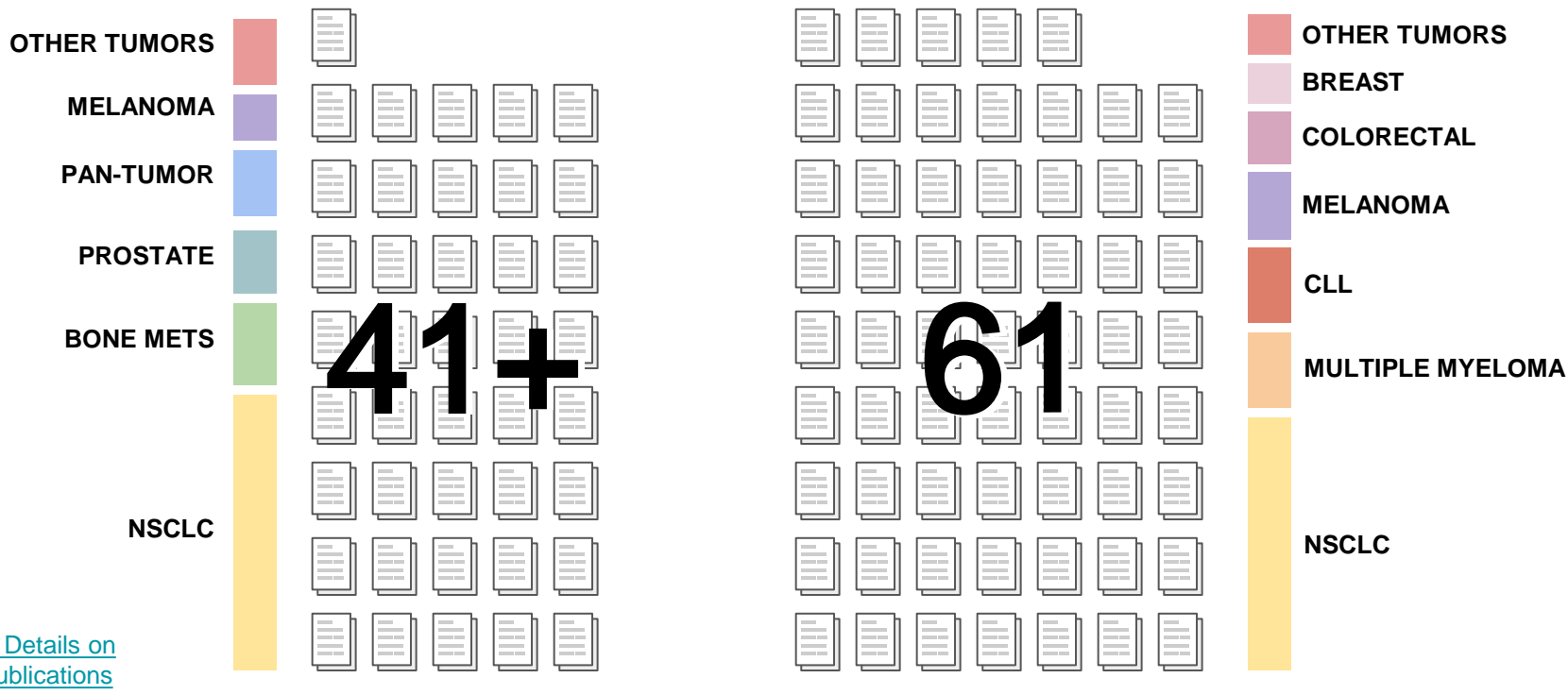


Source

Process

Validation

Published with Flatiron Data



[Additional Details on Flatiron Publications](#)



Independent, partner authored using Flatiron data

Flatiron-authored (Including collaborators)




How are others applying Flatiron RWE?

Commercial Applications




Understanding uptake of new therapies in specific subpopulations


Research Applications



Understand reasons for discontinuation of current standards of care




Outpatient health resource utilization useful for CEA based on RWD



Understand correlation between treatment sequence and survival outcomes

Regulatory Applications



Submission of Real-World Outcomes for label expansion opportunities

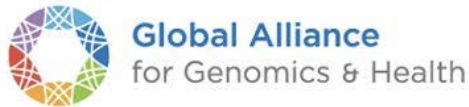
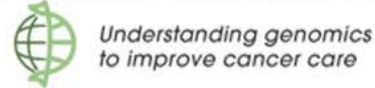
Many Are Looking at Different Parts of the Same Problem



FLATIRON



The Cancer Genome Atlas



THE WALL STREET JOURNAL.

OPINION | COMMENTARY

Clinical Drug Trials May Be Coming to Your Doctor's Office

Electronic medical records make possible a new research model based on real-world evidence.



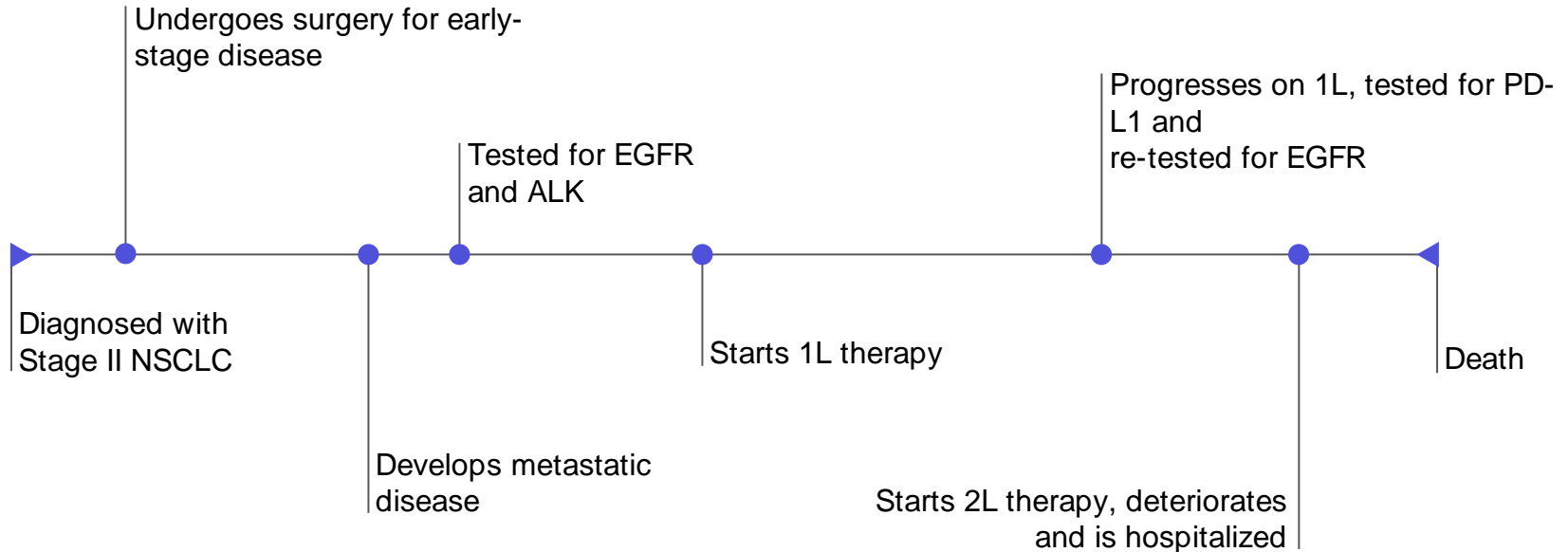
PHOTO: ISTOCK/GETTY IMAGES

By Amy Abernethy and Sean Khozin

Sept. 12, 2017 6:56 p.m. ET

15 COMMENTS

Patient Journey



Takeaway



Be your own advocate. How do you want your story told?

